

LED String Lights (Colorful) SKU: DFR0439

Contents

- 1 Introduction
- 2 Specification
- 3 Board Overview
- 4 Tutorial
 - 4.1 Requirements
 - 4.2 Connection Diagram
 - 4.3 Sample Code
- 5 FAQ
- 6 More



(/wiki/index.php/File:DFR0439.jpg)

Lighting String Module (Colorful)

Introduction

These LED string lights are composed of a series of LEDs that have a colorful glow. They can be used as decorations and for other interesting applications. Use them as outdoor string lights, string lights in your bedroom, on your patio or on a globe. There are many applications, what can you think of?



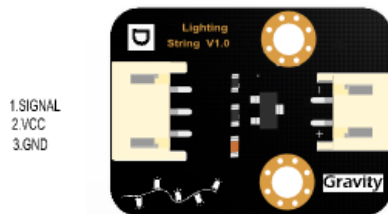
(/wiki/index.php/File:Warning_yellow.png)

Note: Use the provided adapter to power the string to avoid risk of damage.

Specification

- Operating Voltage: 2.5 - 5V (5V Recommended)
- LED Length: 4 meters / 40 LEDs
- Adapter Board Dimensions: 30 x 22 mm / 1.18 x 0.86 "

Board Overview



(/wiki/index.php/File:Name_DFR0448_Board.png)

No.	Label	Description
1	Signal	Input Signal
2	VCC	Power +
3	GND	Power -

Tutorial

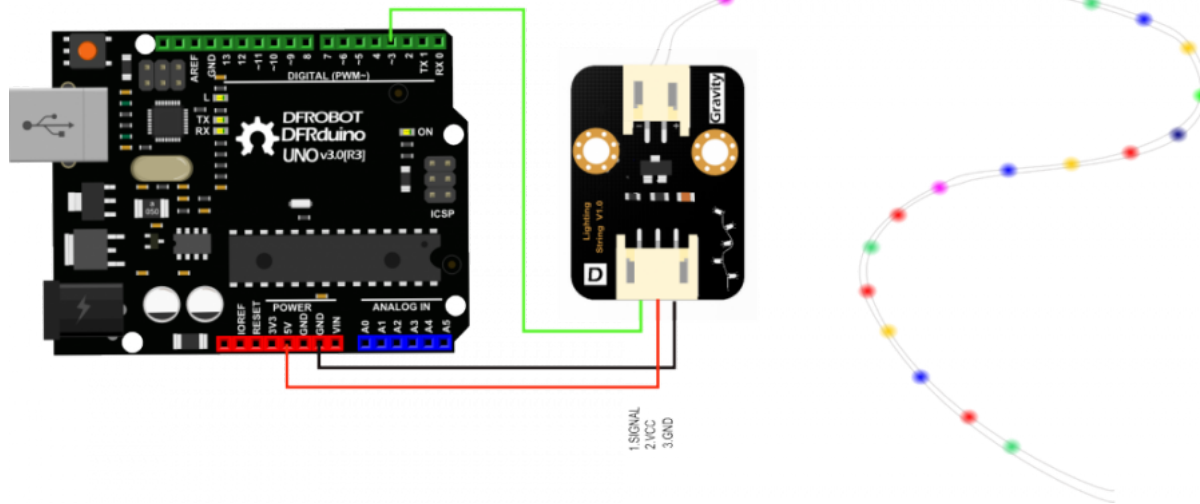
In this section, we'll tell you how to use the LED module

Requirements

- **Hardware**
 - DFRduino UNO (or similar) x 1

- LED String x 1
- M-M/F-M/F-F Jumper wires
- **Software**
 - Arduino IDE Click to Download Arduino IDE from Arduino® (<https://www.arduino.cc/en/Main/Software%7C>)

Connection Diagram



(/wiki/index.php/File:DFR0439_Connection_Diagram.png)

Sample Code

```

1 /*****
2 * LED String Lights
3 * *****/
4 * Control a String Light to fade in and out
5
6 * @author Dongzi(1185787528@qq.com)
7 * @version V1.0
8 * @date 2016-5-26
9 * ALL above must be included in any redistribution
10 * *****/
11 int t;
12 #define Light_string 3
13 void setup() {
14
15   pinMode( Light_string, OUTPUT);
16 }
17 void loop() {
18
19   for(t=5;t<255;t++) // turn the Light string on (HIGH is the voltage level) little and little.
20   {
21     analogWrite( Light_string, t);
22     delay(10);
23   }
24
25   if(t>=255) // turn the Light string off (HIGH is the voltage level) little and little.
26   {
27     for(t=255;t>5;t--)
28     {
29       analogWrite( Light_string, t);
30       delay(10);
31     }
32   }
33 }

```

FAQ

For any questions, advice or cool ideas to share, please visit the **DFRobot Forum** (<http://www.dfrobot.com/forum/>).

More

Schematic (https://github.com/Arduinolibrary/DFRobot_Lighting_String_Module/raw/master/Lighting%20String%20Schematic.pdf)

Layout (https://github.com/Arduinolibrary/DFRobot_Lighting_String_Module/raw/master/Lighting%20String%20Layout.pdf)



(<http://www.dfrobot.com/>) Shopping from **DFRobot Store** ([https://www.dfrobot.com/index.php?](https://www.dfrobot.com/index.php?route=product/product&search=DFR0439&description=true&product_id=1545)

[route=product/product&search=DFR0439&description=true&product_id=1545](https://www.dfrobot.com/index.php?route=product/product&search=DFR0439&description=true&product_id=1545)) or **DFRobot Distributor**. (<http://www.dfrobot.com/index.php?route=information/distributorslogo>)

This page was last modified on 14 October 2016, at 06:55.

Content is available under GNU Free Documentation License 1.3 or later (<https://www.gnu.org/copyleft/fdl.html>) unless otherwise noted.



(<https://www.gnu.org/copyleft/fdl.html>)



(<http://www.mediawiki.org/>)