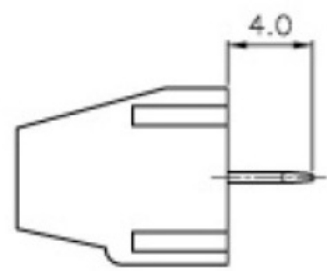
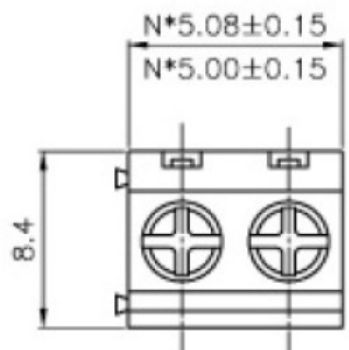
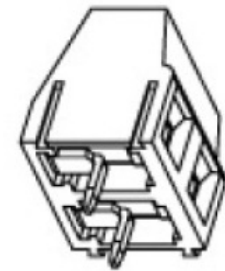


REV.	DESCRIPTION	DRAWN	CHECKED	APPROVED
A	NEW RELEASE	LJH 07/02/07'		

4



STRAIGHT TYPE



- MATERIAL
SCREWS: M2.5 STEEL ZINC PLATED
WIRE GUARD: PHOSPHOR BRONZE NI PLATED OR STAINLESS STEEL
PIN HEADER: BRASS, TIN PLATED
HOUSING: PA66, UL94V-0

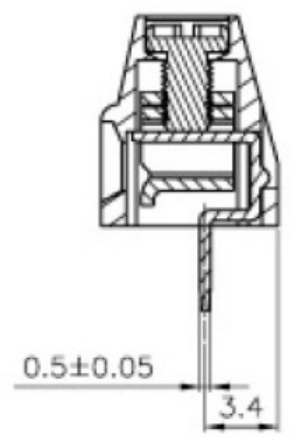
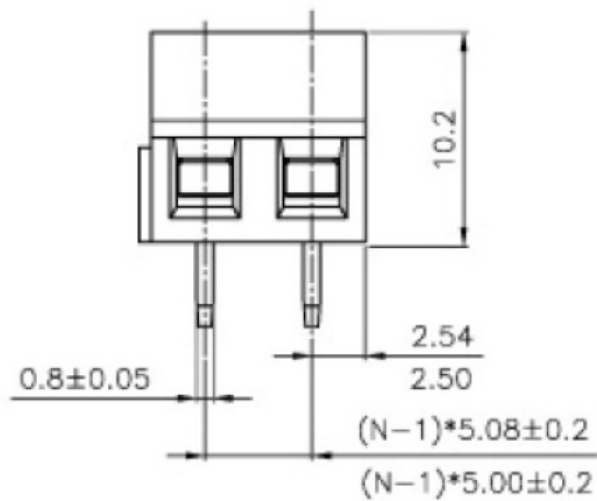
- ELECTRICAL
RATED VOLTAGE : 300V
RATED CURRENT : 12A
CONTACT RESISTANCE : 20mΩ
INSULATION RESISTANCE : 5000MΩ/1000V
WITHSTANDING VOLTAGE : AC2000V/1Min
WIRE RANGE : 26-14AWG 1.5mm²

- MECHANICAL
TEMP.RANGE : -40°C~+105°C
MAX SOLDERING : +250°C, FOR 5 SEC.
TORQUE : 0.5Nm(4.5IB.IN)
STRIP LENGTH : 5-6mm

PRODUCT NUMBER CODE:

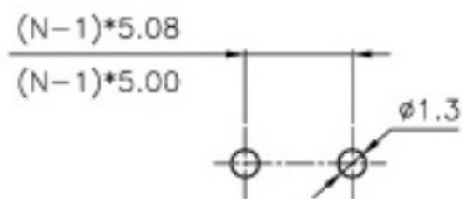
KF127 - X X X X X

- CONTACTS TYPE
V:VERTICAL TYPE
R:RIGHT ANGLE TYPE
- HOUSING COLOR
B:BLACK G:GREEN
L:BLUE R:RED
- CONTACT PLATING
0:GOLD FLASH
3:30u" 6:TIN
- CONNECTOR TYPE
P:PLUG S:SOCKET
- No.OF CONTACTS
02 03 08 16



SECTION A-A

N=Number of contacts



RECOMMEND PCB LAYOUT (TOLERANCE=±0.05)

GENERAL TOLERANCE		ANGLE TOLERANCE	
X.	±0.60	X.	±5°
.X	±0.38	.X	±3°
.XX	±0.25	.XX	±2°

DRAWING TYPE	CUSTOMER		
SCALE	1:1	SHEET	1 OF 1
DRAWING NO.	F127-XXXXX		

PROJECTION		TITLE	EURO TERMINAL BLOCKS
UNITS	mm		PITCH5.00,5.08MM
SHEET SIZE	A4	SERIES	KF127 SERIES



Toptek s.r.l.
www.toptek-co.com