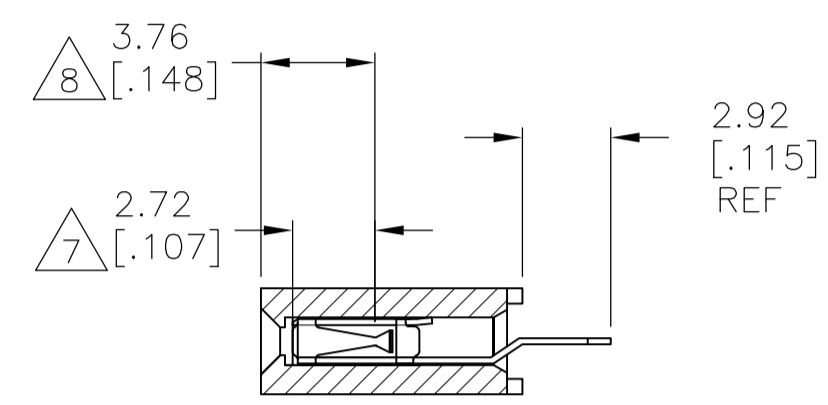
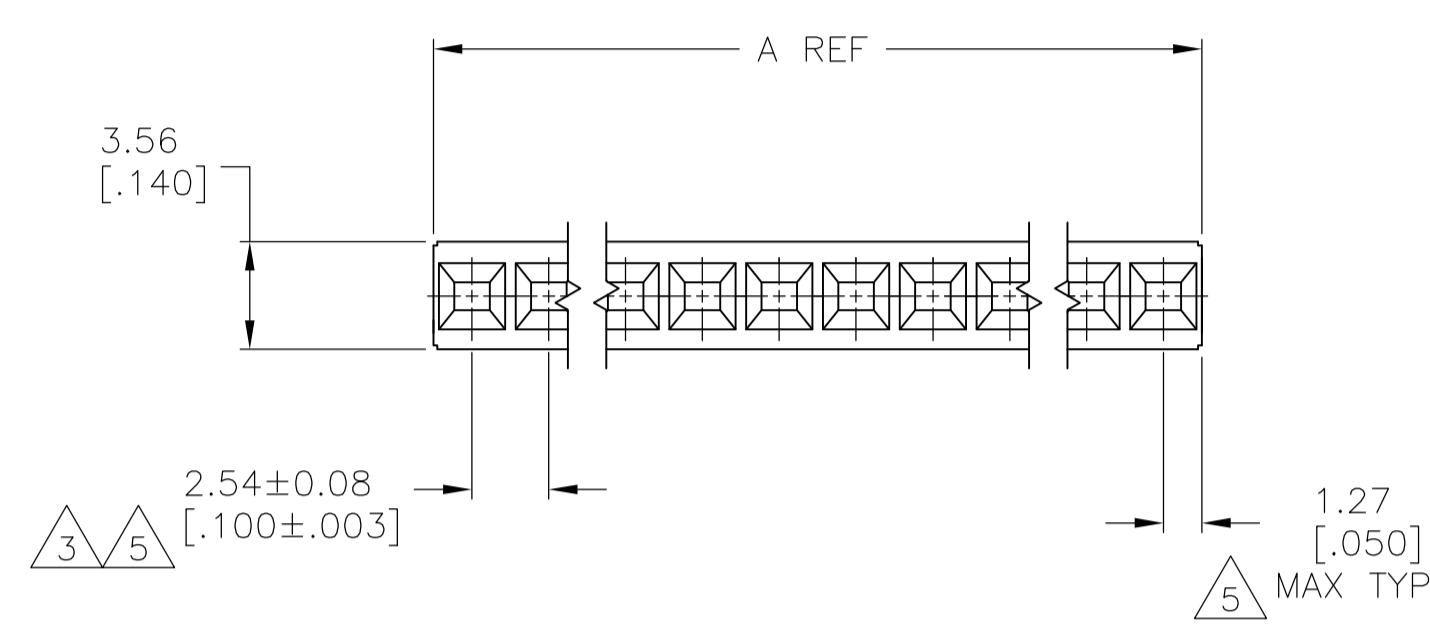
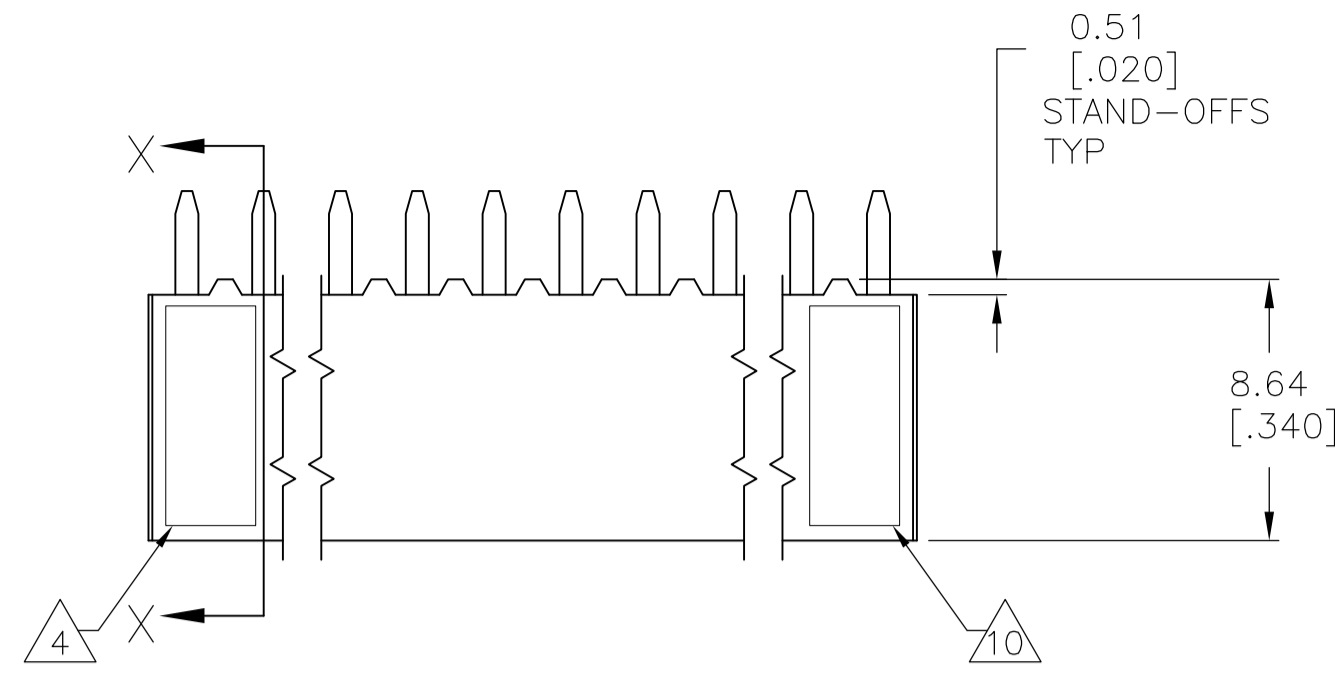
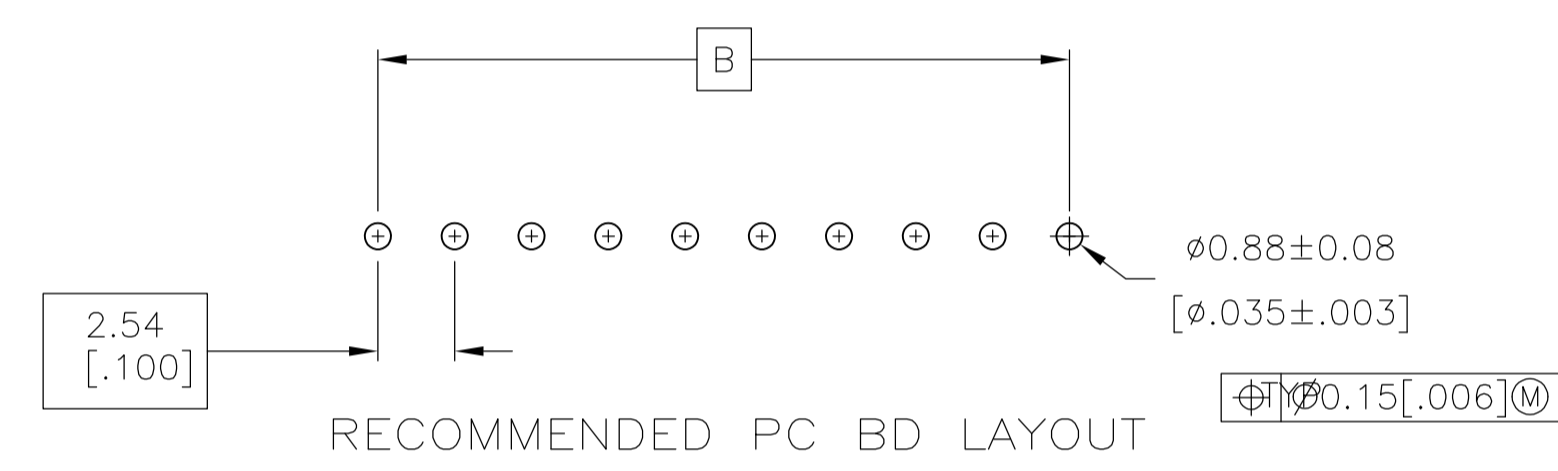


LOC		DIST		REVISIONS				
P	LTR	DESCRIPTION	DATE	DMN	APVD			
R1		REVISED PER ECO-08-019092	05AUG08	HMR	JO			
R2		REVISED PER ECO-10-000443	12JAN09	KK	AEG			



SECTION X-X



2.54 [.100]	5.08 [.200]	2	12	8-534237-9
99.06 [3.900]	101.60 [4.000]	40	12	8-534237-8
96.52 [3.800]	99.06 [3.900]	39	12	8-534237-7
93.98 [3.700]	96.52 [3.800]	38	12	8-534237-6
91.44 [3.600]	93.98 [3.700]	37	12	8-534237-5
88.90 [3.500]	91.44 [3.600]	36	12	8-534237-4
86.36 [3.400]	88.90 [3.500]	35	12	8-534237-3
83.82 [3.300]	86.36 [3.400]	34	12	8-534237-2
81.28 [3.200]	83.82 [3.300]	33	12	8-534237-1
78.74 [3.100]	81.28 [3.200]	32	12	8-534237-0
76.20 [3.000]	78.74 [3.100]	31	12	7-534237-9
73.66 [2.900]	76.20 [3.000]	30	12	7-534237-8
71.12 [2.800]	73.66 [2.900]	29	12	7-534237-7
68.58 [2.700]	71.12 [2.800]	28	12	7-534237-6
66.04 [2.600]	68.58 [2.700]	27	12	7-534237-5
63.50 [2.500]	66.04 [2.600]	26	12	7-534237-4
60.96 [2.400]	63.50 [2.500]	25	12	7-534237-3
58.42 [2.300]	60.96 [2.400]	24	12	7-534237-2
55.88 [2.200]	58.42 [2.300]	23	12	7-534237-1
53.34 [2.100]	55.88 [2.200]	22	12	7-534237-0
50.80 [2.000]	53.34 [2.100]	21	12	6-534237-9
48.26 [1.900]	50.80 [2.000]	20	12	6-534237-8
45.72 [1.800]	48.26 [1.900]	19	12	6-534237-7
43.18 [1.700]	45.72 [1.800]	18	12	6-534237-6
40.64 [1.600]	43.18 [1.700]	17	12	6-534237-5
38.10 [1.500]	40.64 [1.600]	16	12	6-534237-4
35.56 [1.400]	38.10 [1.500]	15	12	6-534237-3
33.02 [1.300]	35.56 [1.400]	14	12	6-534237-2
30.48 [1.200]	33.02 [1.300]	13	12	6-534237-1
27.94 [1.100]	30.48 [1.200]	12	12	6-534237-0
25.40 [1.000]	27.94 [1.100]	11	12	5-534237-9
22.86 [.900]	25.40 [1.000]	10	12	5-534237-8
20.32 [.800]	22.86 [.900]	9	12	5-534237-7
17.78 [.700]	20.32 [.800]	8	12	5-534237-6
15.24 [.600]	17.78 [.700]	7	12	5-534237-5
12.70 [.500]	15.24 [.600]	6	12	5-534237-4
10.16 [.400]	12.70 [.500]	5	12	5-534237-3
7.62 [.300]	10.16 [.400]	4	12	5-534237-2
5.08 [.200]	7.62 [.300]	3	12	5-534237-1
B	A	NO OF POSN	PART NUMBER	

2.54 [.100]	5.08 [.200]	2	9	3-534237-9
99.06 [3.900]	101.60 [4.000]	40	9	3-534237-8
96.52 [3.800]	99.06 [3.900]	39	9	3-534237-7
93.98 [3.700]	96.52 [3.800]	38	9	3-534237-6
91.44 [3.600]	93.98 [3.700]	37	9	3-534237-5
88.90 [3.500]	91.44 [3.600]	36	9	3-534237-4
86.36 [3.400]	88.90 [3.500]	35	9	3-534237-3
83.82 [3.300]	86.36 [3.400]	34	9	3-534237-2
81.28 [3.200]	83.82 [3.300]	33	9	3-534237-1
78.74 [3.100]	81.28 [3.200]	32	9	3-534237-0
76.20 [3.000]	78.74 [3.100]	31	9	2-534237-9
73.66 [2.900]	76.20 [3.000]	30	9	2-534237-8
71.12 [2.800]	73.66 [2.900]	29	9	2-534237-7
68.58 [2.700]	71.12 [2.800]	28	9	2-534237-6
66.04 [2.600]	68.58 [2.700]	27	9	2-534237-5
63.50 [2.500]	66.04 [2.600]	26	9	2-534237-4
60.96 [2.400]	63.50 [2.500]	25	9	2-534237-3
58.42 [2.300]	60.96 [2.400]	24	9	2-534237-2
55.88 [2.200]	58.42 [2.300]	23	9	2-534237-1
53.34 [2.100]	55.88 [2.200]	22	9	2-534237-0
50.80 [2.000]	53.34 [2.100]	21	9	1-534237-9
48.26 [1.900]	50.80 [2.000]	20	9	1-534237-8
45.72 [1.800]	48.26 [1.900]	19	9	1-534237-7
43.18 [1.700]	45.72 [1.800]	18	9	1-534237-6
40.64 [1.600]	43.18 [1.700]	17	9	1-534237-5
38.10 [1.500]	40.64 [1.600]	16	9	1-534237-4
35.56 [1.400]	38.10 [1.500]	15	9	1-534237-3
33.02 [1.300]	35.56 [1.400]	14	9	1-534237-2
30.48 [1.200]	33.02 [1.300]	13	9	1-534237-1
27.94 [1.100]	30.48 [1.200]	12	9	1-534237-0
25.40 [1.000]	27.94 [1.100]	11	9	534237-9
22.86 [.900]	25.40 [1.000]	10	9	534237-8
20.32 [.800]	22.86 [.900]	9	9	534237-7
17.78 [.700]	20.32 [.800]	8	9	534237-6
15.24 [.600]	17.78 [.700]	7	9	534237-5
12.70 [.500]	15.24 [.600]	6	9	534237-4
10.16 [.400]	12.70 [.500]	5	9	534237-3
7.62 [.300]	10.16 [.400]	4	9	534237-2
5.08 [.200]	7.62 [.300]	3	9	534237-1
B	A	NO OF POSN	PART NUMBER	

- 1 HOUSING: FLAME RETARDANT, GLASS FILLED, POLYESTER, COLOR: BLACK. CONTACT: PHOSPHOR BRONZE
- 2 CONTACT: DUPLEX PLATED 0.76µm[.000030] GOLD IN CONTACT AREA, 3.81-7.62µm[.000150-.000300] BRIGHT TIN-LEAD ON LEADS ALL OVER 1.27µm[.000050] MIN NICKEL
- 3 THESE DIMENSIONS PERTAIN TO CAVITY CENTERLINES ONLY - NOT TO CONTACT LOCATIONS
- 4 PART NUMBER AND DATE CODE MARKED IN APPROXIMATE LOCATION SHOWN.
- 5 TOLERANCE IS NON-CUMULATIVE.
- 6 2 POSITION DATE CODE IS MARKED OPPOSITE SIDE OF TE LOGO.
- 7 POINT-OF-MEASUREMENT DIMENSION FOR PLATING THICKNESS (INSIDE CONTACT BEAM).
- 8 POINT-OF-CONTACT DIMENSION.
- 9 NO PART NUMBER MARKING REQUIRED FOR THIS PART.
- 10 TE LOGO AND CSA LOGO ARE MOLDED INTO HOUSING, THIS LOCATION.
- 11 CONTACT: DUPLEX PLATED 0.76µm[.000030] GOLD IN CONTACT AREA, 3.81-7.62µm[.000150-.000300] MATTE TIN ON LEADS ALL OVER 1.27µm[.000050] MIN NICKEL
- 12 ROHS 2002/95/EC COMPLIANT
- 13 OBSOLETE PARTS: OBSOLETE CIS STREAMLINING PER D.RENAUD/D.SINISI
- 14 OBSOLETE.

THIS DRAWING IS A CONTROLLED DOCUMENT.

DIMENSIONS: mm [INCHES]	TOLERANCES UNLESS OTHERWISE SPECIFIED:	0 PLC ± -	1 PLC ± -	2 PLC ± 0.25[.010]	3 PLC ± 0.13[.005]	4 PLC ± -	ANGLES ± -
MATERIAL	FINISH	WEIGHT	SIZE	CAGE CODE	DRAWING NO	RESTRICTED TO	
1	SEE TABLE	-	A1	00779	534237	-	

CUSTOMER DRAWING SCALE 4:1 SHEET 1 OF 1 REV R2

Tyco Electronics Corporation Harrisburg, Pa 17105-3608

RECT.PT.ASSY, MOD IV, SINGLE ROW, .100CL, VERTICAL BOARD MOUNT, CLOSED, TOP ENTRY, SHORT PNT. OF CONTACT