

F

E

D

C

B

A

F

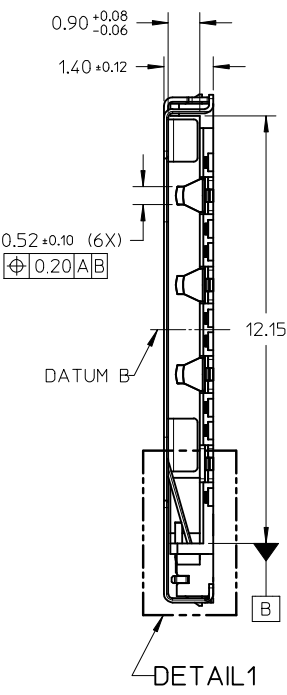
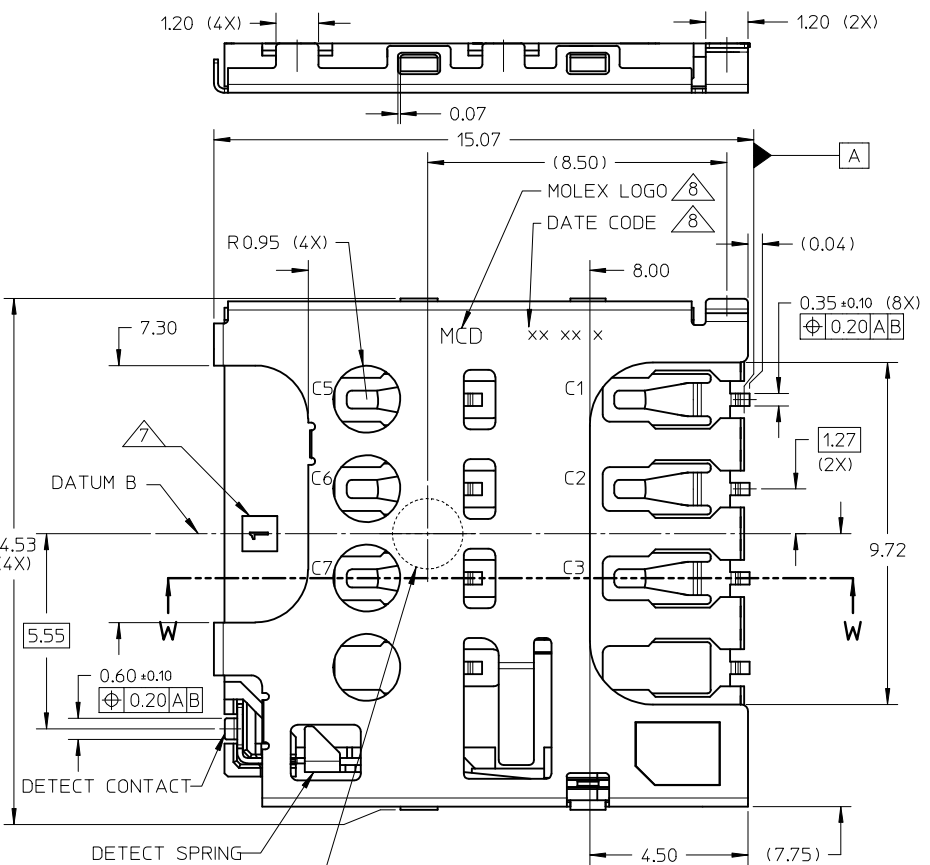
E

D

C

B

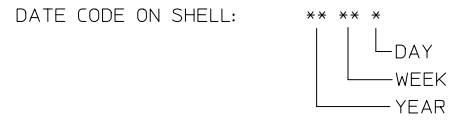
A



NOTES:

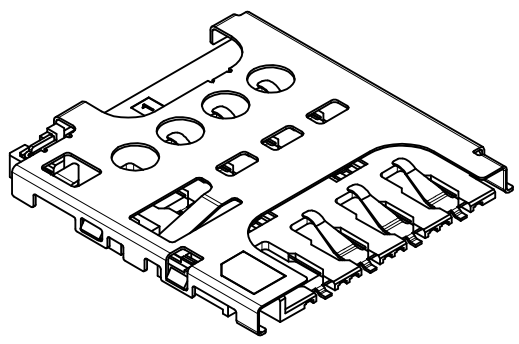
1. MATERIALS:
 - HOUSING: LIQUID CRYSTAL POLYMER(LCP) 40% GLASS FILLED, UL94-V0
 - COLOUR: BLACK
 - TERMINAL: COPPER ALLOY
 - DETECT CONTACT: COPPER ALLOY
 - DETECT PIN: COPPER ALLOY
 - METAL SHELL: STAINLESS STEEL
2. PLATING FINISHES:
 - TERMINAL:-
 - CONTACT: 0.38µM MIN GOLD OVER 1.27µM MIN NICKEL UNDERPLATE
 - SOLDERTAIL: 1.27µM MIN MATTE TIN OVER 1.27µM MIN NICKEL UNDERPLATE
 - SHELL:-
 - SOLDERTAB: 1.27µM MIN MATTE TIN OVER 1.27µM MIN NICKEL UNDERPLATE
 - DETECT CONTACT:-
 - CONTACT: 0.127µM MIN GOLD OVER 1.27µM MIN NICKEL UNDERPLATE
 - SOLDERTAIL: 1.27µM MIN MATTE TIN OVER 1.27µM MIN NICKEL UNDERPLATE
 - DETECT SPRING:-
 - CONTACT: 0.127µM MIN GOLD OVER 1.27µM MIN NICKEL UNDERPLATE
 - SOLDERTAIL: 1.27µM MIN MATTE TIN OVER 1.27µM MIN NICKEL UNDERPLATE
3. OVERALL COPLANARITY(SOLDERTAIL AND SOLDERTAB): 0.08MM MAX
4. PRODUCT SPECIFICATION: PS-78727-001
5. PACKAGING SPECIFICATION: PK-78727-001
6. COMPLIANT TO RoHS DIRECTIVE 2002/95/EC AND ELV DIRECTIVE 2000/53/EC.

- △ OVERALL COPLANARITY(SOLDERTAIL AND SOLDERTAB): 0.08MM MAX
- △ CAVITY NUMBER LOCATION
- △ MANUFACTURER ID AND DATE CODE TO BE PRINTED



CARD INSERTION STATE	DETECT SWITCH CIRCUIT STATE	SCHEMATIC
CARD MATED	OPENED	(D.S.) ● ● ● (D.C)
CARD UNMATED	CLOSED	(D.S.) ● ● ● (D.C)

D.C. DETECT CONTACT
D.S. DETECT SPRING



RECOMMENDED PICK & PLACE POSITION NOZZLE(φ2.00)

ADD D.S. TABLE	2012/10/09	2012/11/01	2012/11/01
EC NO: S2013-0205	DRW: EANG	CHKD: JTAN02	APPR: KHL IM
REV	DESCRIPTION		
A1	REV		

QUALITY SYMBOLS
$F_A = 0$
$F_C = 0$
$F_D = 0$

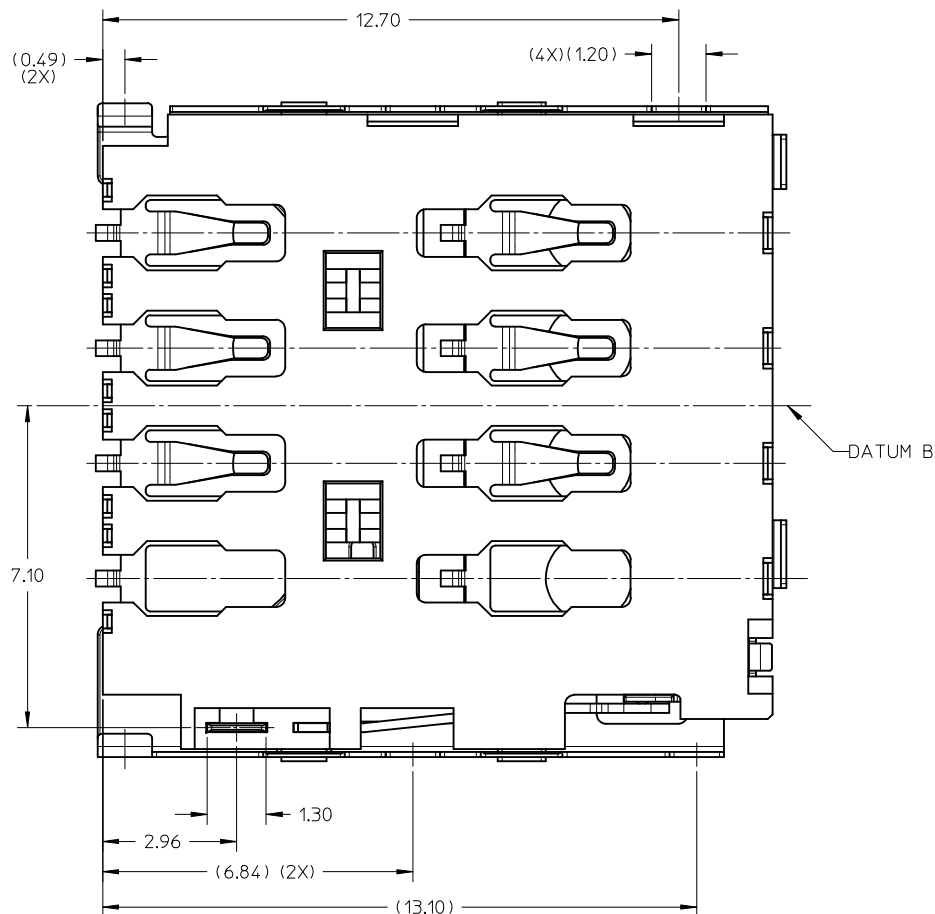
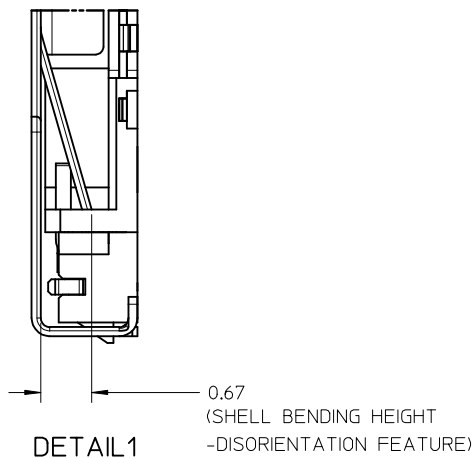
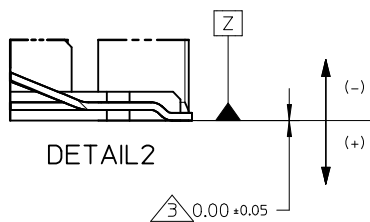
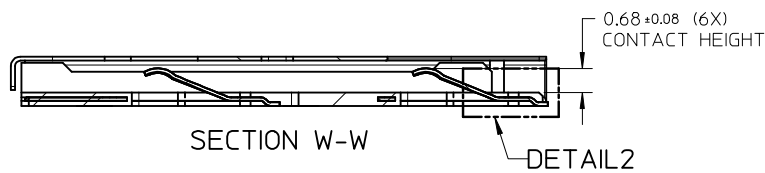
GENERAL TOLERANCES (UNLESS SPECIFIED)	
	mm INCH
4 PLACES	± --- ± ---
3 PLACES	± --- ± ---
2 PLACES	± 0.20 ± ---
1 PLACE	± --- ± ---
ANGULAR ± 1 °	
DRAFT WHERE APPLICABLE MUST REMAIN WITHIN DIMENSIONS	

DIMENSION STYLE MM ONLY	
DRAWN BY	DATE
EANG	2012/01/04
CHECKED BY	DATE
JTAN02	2012/01/06
APPROVED BY	DATE
KHL IM	2012/01/13
MATERIAL NO.	
78727-0001	

SCALE	DESIGN UNITS
NTS	METRIC

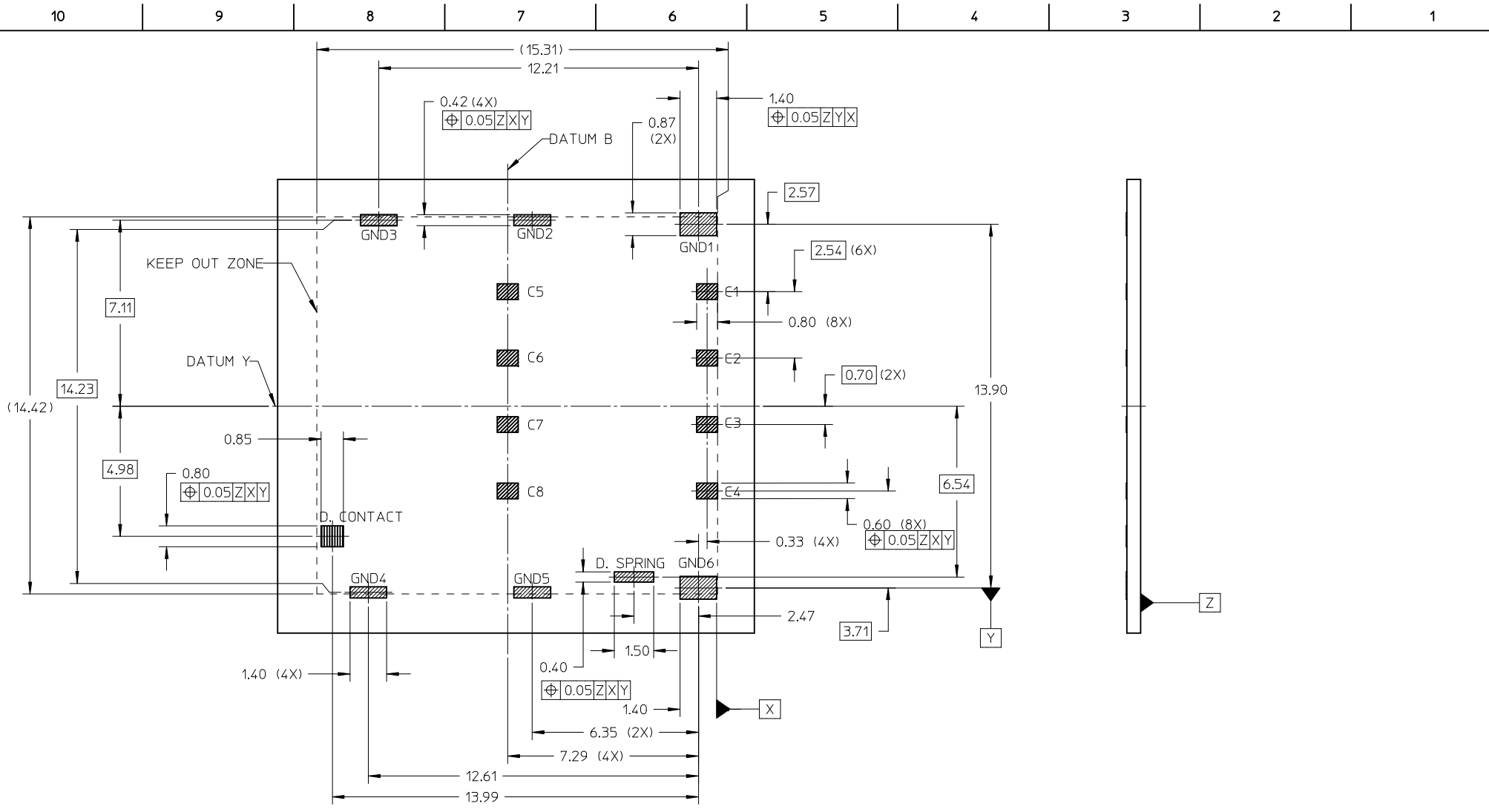
THIRD ANGLE PROJECTION	TITLE	
	MICRO SIM CONNECTOR 1.40MM HEIGHT, PUSH PULL WITH DETECT PIN	
	MOLEX MOLEX INCORPORATED	
	DOCUMENT NO.	SHEET NO.
	SD-78727-001	1 OF 4

10 9 8 7 6 5 4 3 2 1



ADD D.S. TABLE EC NO: S2013-0205 DRW: EANG 2012/10/09 CHKD: JIAN02 2012/11/01 APPR: KHL IM 2012/11/01	DESCRIPTION REV	QUALITY SYMBOLS	GENERAL TOLERANCES (UNLESS SPECIFIED)		DIMENSION STYLE	SCALE	DESIGN UNITS	THIRD ANGLE PROJECTION			
		$\nabla_A = 0$ $\nabla_C = 0$ $\nabla_P = 0$	mm	INCH	MM ONLY	NTS	METRIC				
		4 PLACES ± --- ± --- 3 PLACES ± --- ± --- 2 PLACES ± 0.20 ± --- 1 PLACE ± --- ± ---	ANGULAR ± 1 °		DRAWN BY EANG CHECKED BY EANG02 APPROVED BY KHL IM DATE 2012/01/04 DATE 2012/01/06 DATE 2012/01/13	TITLE			MICRO SIM CONNECTOR 1.40MM HEIGHT, PUSH PULL WITH DETECT PIN molex MOLEX INCORPORATED		
		DRAFT WHERE APPLICABLE MUST REMAIN WITHIN DIMENSIONS		MATERIAL NO. 78727-0001 SIZE A3	DOCUMENT NO. SD-78727-001 SHEET NO. 2 OF 4						

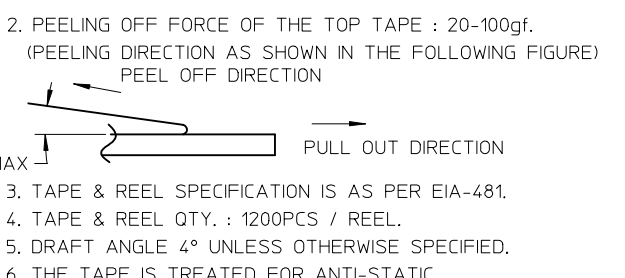
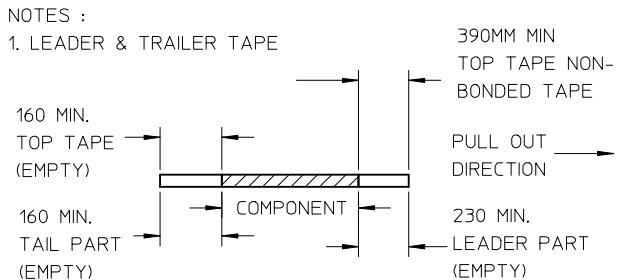
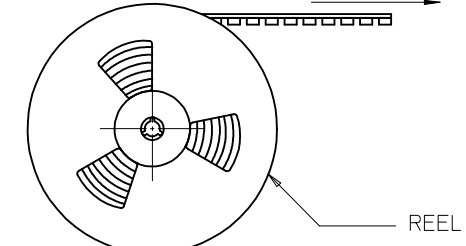
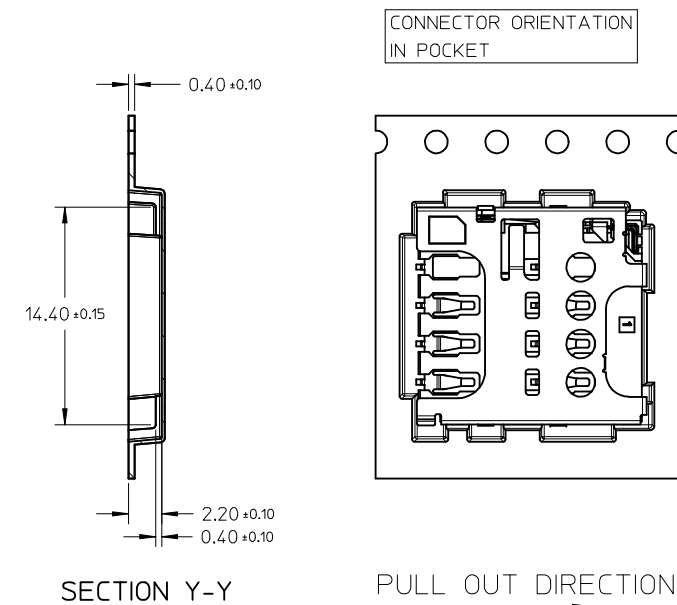
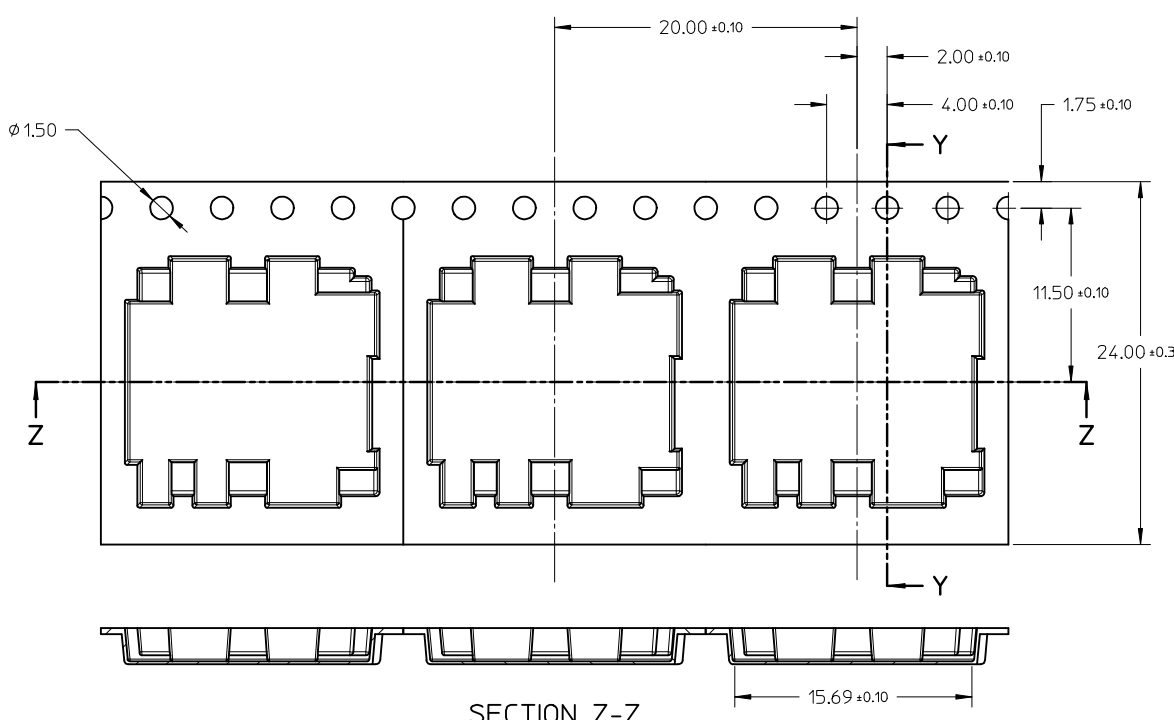
9 8 7 6 5 4 3 2 1



RECOMMENDED PCB LAYOUT
 (NON-SOLDER MASK DEFINE PWB)
 PWB TOLERANCE: ±0.05MM

ADD D.S. TABLE EC NO: S2013-0205 DRW: EANG CHKD: JTAN02 APPR: KHLIM	2012/10/09 2012/11/01 2012/11/01	DESCRIPTION REV	QUALITY SYMBOLS	GENERAL TOLERANCES (UNLESS SPECIFIED)	DIMENSION STYLE	SCALE	DESIGN UNITS	THIRD ANGLE PROJECTION	
			$F_A=0$ $F_G=0$ $F_P=0$	mm INCH 4 PLACES ± --- ± --- 3 PLACES ± --- ± --- 2 PLACES ± 0.20 ± --- 1 PLACE ± --- ± --- ANGULAR ± 1°	MM ONLY	NTS	METRIC		
				DRAFT WHERE APPLICABLE MUST REMAIN WITHIN DIMENSIONS	DRAWN BY: EANG DATE: 2012/01/04 CHECKED BY: JTAN02 DATE: 2012/01/06 APPROVED BY: KHLIM DATE: 2012/01/13	TITLE	MICRO SIM CONNECTOR 1.40MM HEIGHT, PUSH PULL WITH DETECT PIN		
					MATERIAL NO.: 78727-0001 SIZE: A3	MOLEX INCORPORATED DOCUMENT NO.: SD-78727-001 SHEET NO.: 3 OF 4	THIS DRAWING CONTAINS INFORMATION THAT IS PROPRIETARY TO MOLEX INCORPORATED AND SHOULD NOT BE USED WITHOUT WRITTEN PERMISSION		

10 9 8 7 6 5 4 3 2 1



LEADER LENGTH	SEAL TYPE	REEL MATL	REEL COLOUR
390MM	COLD SEAL	PAPER	WHITE

ADD D.S. TABLE EC NO: S2013-0205 DRW: EANG CHKD: JTAN02 APPR: KHL IM	2012/10/09 2012/11/01 2012/11/01	DESCRIPTION QUALITY SYMBOLS $F_A=0$ $F_G=0$ $F_P=0$	GENERAL TOLERANCES (UNLESS SPECIFIED)		DIMENSION STYLE MM ONLY		SCALE NTS	DESIGN UNITS METRIC	THIRD ANGLE PROJECTION		
				mm	INCH	DRAWN BY	DATE	TITLE			
			4 PLACES	± ---	± ---	EANG	2012/01/04	MICRO SIM CONNECTOR 1.40MM HEIGHT, PUSH PULL WITH DETECT PIN			
			3 PLACES	± ---	± ---	CHECKED BY	DATE				
2 PLACES	± 0.20	± ---	JTAN02	2012/01/06	MOLEX INCORPORATED						
1 PLACE	± ---	± ---	APPROVED BY	DATE							
DRAFT WHERE APPLICABLE MUST REMAIN WITHIN DIMENSIONS			ANGULAR ± 1°		MATERIAL NO. 78727-0001		DOCUMENT NO. SD-78727-001	SHEET NO. 4 OF 4			
SIZE A3			THIS DRAWING CONTAINS INFORMATION THAT IS PROPRIETARY TO MOLEX INCORPORATED AND SHOULD NOT BE USED WITHOUT WRITTEN PERMISSION								

9 8 7 6 5 4 3 2 1