

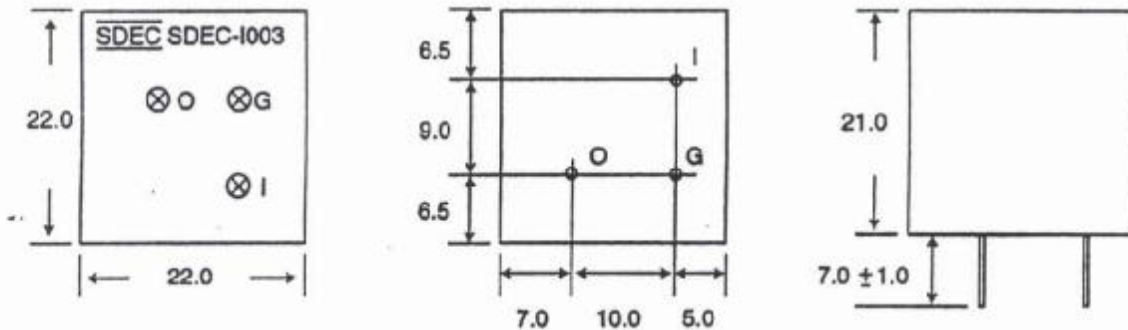
SPECIFICATION OF I-003

DESCRIPTION : DC-AC INVERTER

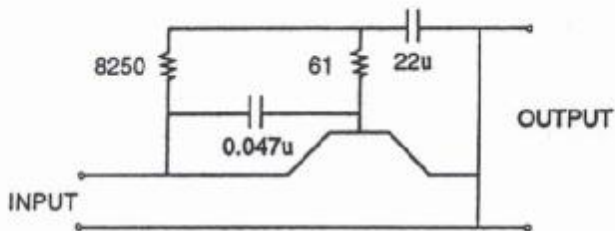
1. CHARACTERISTICS :

ITEM	SYMBOL	RATINGS	ITEM	SYMBOL	RATINGS
Input Voltage	V_{IN}	5V \pm 5%	OSC. Frequency	F_{INV}	400~500Hz
Input Current	I_{IN}	80mA	Output Voltage	V_{OUT}	90~110V
Operating Temperature	$^{\circ}C$	-10~ +60	Load Range	CN2	70~100
Storage Temperature	$^{\circ}C$	-20~ +70	Life	Hrs	35,000

2. PHYSICAL DIMENSION (mm) :

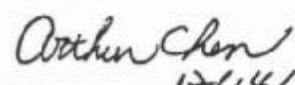


3. SCHEMATICS :



PIN	FUNCTIONS
O	OUTPUT : for EL
G	COMMON: GND/ for EL
I	INPUT : 5V DC \pm 5%

The tolerance unless classified ± 1.0 mm

PREPARED BY	CHECK BY	APPROVED BY
		 12/14/99